

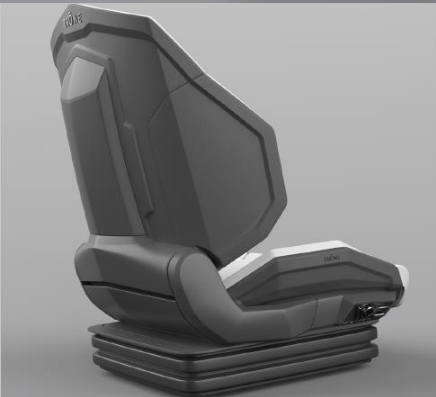
## Why choose an electric forklift seat with memory?



### Safe and healthy working

The current occupational health and safety legislation requires the employer to record the risks of the work in a Risk Inventory & Evaluation report. In this case, the employer, together with the employee, is responsible for complaints arising from the work. Spearhead is prevention.

Complaints caused by prolonged sitting during work can be caused by incorrect ergonomics, a mismatched seat, improper adjustment, a lack of adjustment possibilities, incorrect sitting posture, incorrect driving behavior, poor or no maintenance and / or lack of seating instructions and instructions for use.



### What can you do to reduce the risks of working on the forklift?

- ⦿ Providing information and instruction on safe working
- ⦿ Ensuring safe resources and working methods
- ⦿ Combating dangers at source
- ⦿ Organising the necessary management measures
- ⦿ Providing the right personal protective equipment

### How can the electric TRÔNE memory seat help you?

The TRÔNE seat contributes to healthy and safe working. It has been developed specifically for working on the forklift. There are various types for different types of work. Each type has the ability to reach an optimal personal seat.



- ⦿ ergonomically correct, technically perfect

By default, the TRÔNE has 4 motors to be able to set all ergonomically important positions; a lumbar support and a tilt setting in the seat. With a choice of seat and side support the seat is modularly adapted to the working conditions. Of course, the seat can be manually adjusted to vary during the day in sitting position.



In the software, several applications are optional built-in:

- ⦿ Personal seat profile for every driver (up to 999 drivers)
- ⦿ Automatic Setup (Smartphone, digicard or key)
- ⦿ Track & Trace
- ⦿ Driving behaviour Monitoring
- ⦿ Vibration monitoring Systems
- ⦿ Service Module
- ⦿ Wake up call: ' Now you have to move! '

